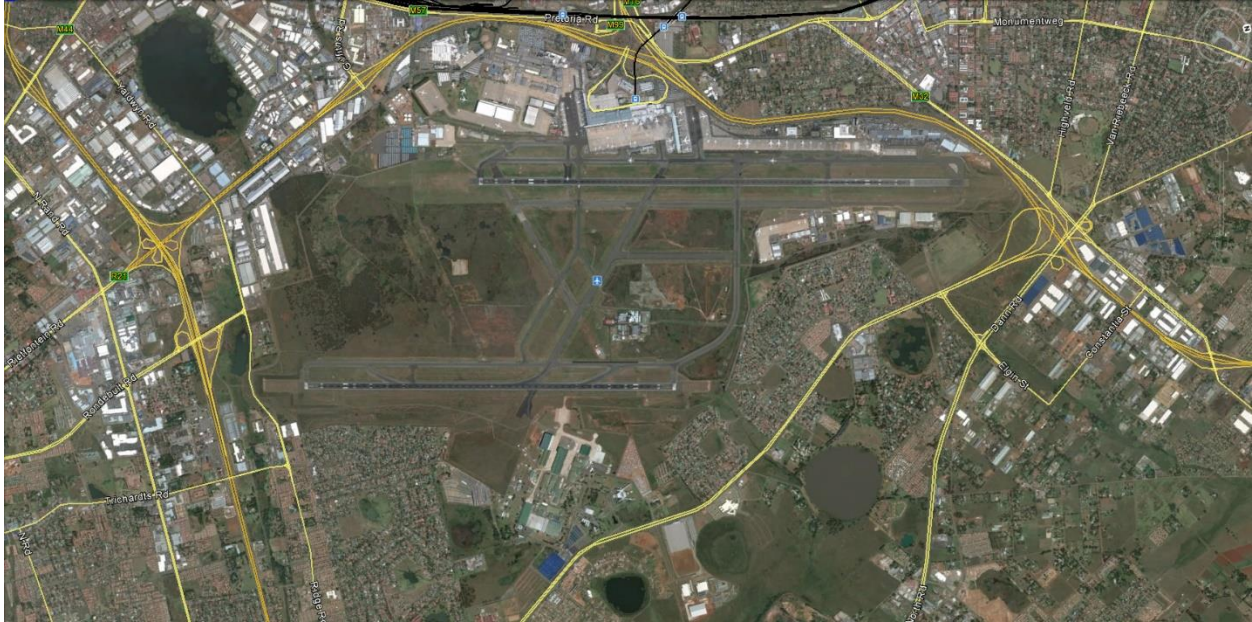




Multiple SPS principals have worked on multiple projects for ACSA and ATNS (while with others).
 Projects for ACSA and ATNS include:

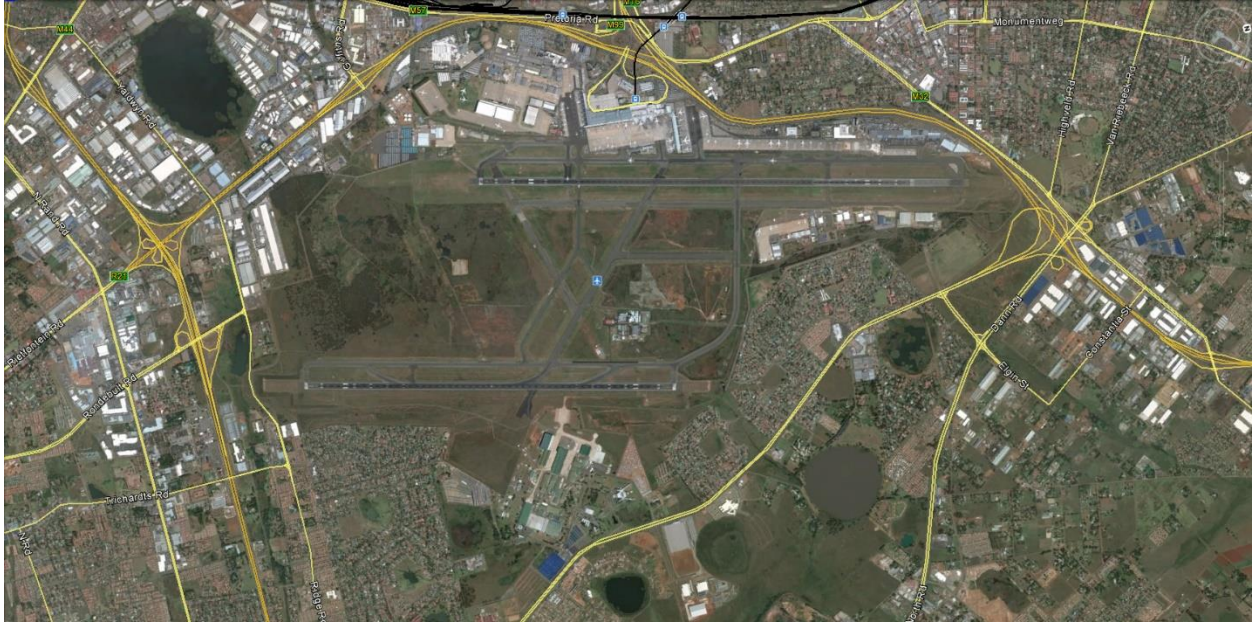
- **Joint US-South Africa cooperation projects funded by United States Trade and Development Agency (USTDA) for ATNS and ACSA**
 - South Africa Airside Capacity Enhancements Project (2012-2013)
 - South Africa Aviation Training Program (2013)
- **Master Planning projects for ACSA as subconsultants to Delta BEC**
 - OR Tambo International Airport Master Plan (2014 – 2016)
 - King Shaka International Airport Master Plan (2014 – 2016)

Location: South Africa: Johannesburg, Durban, & Cape Town
Airports: OR Tambo International Airport (JNB), King Shaka International (DUR) & Cape Town (CPT)
Client: Air Traffic Navigation Service (ATNS), Airports Company South Africa (ACSA), USTDA
Project Title: South Africa Airside Capacity Enhancements Project
Year: 2012-2013
Key Staff: Doug Goldberg, Sheila Thomas (while with others)



SPS principles (while with others), served as the client officer and project manager on this USTDA-sponsored airside capacity enhancements study under the direction of Air Traffic and Navigation Services (ATNS) and Airports Company South Africa (ACSA). SPS principals were responsible for identifying and evaluating opportunities for enhancing airside capacity and reducing delays by improving the airfield layout and associated airside operational procedures at the Cape Town, King Shaka (Durban) and O. R. Tambo (Johannesburg) international airports.

Location: **Johannesburg, South Africa**
Airport: **OR Tambo International Airport (JNB)**
Client: **Airports Company South Africa (ACSA)**
Project Title: **OR Tambo International Airport Master Plan**
Year: **2014-2016**
Key Staff: **Doug Goldberg, Sheila Thomas, Jeff Thomas (while with others)**



SPS principles, while employed by others, led the preparation of the long-range master plan for O.R. Tambo International Airport, under a subcontract with Delta BEC, a South African engineering firm. The master plan involved a long-range strategic visioning process with input from ACSA, the airlines, South African Air Traffic Navigation Services, and other stakeholders to develop a long-range strategy for serving forecast demand. An extensive concept development and evaluation process was conducted to select the most viable development strategy for the airside, terminal, landside, cargo and commercial elements of the airport

Location: Durban, South Africa
Airport: King Shaka International Airport (DUR)
Client: Airports Company South Africa (ACSA)
Project Title: King Shaka International Airport Master Plan
Year: 2014-2016
Key Staff: Doug Goldberg, Sheila Thomas, Jeff Thomas (while with others)



SPS principles led the preparation of the long-range master plan for King Shaka International Airport, under a subcontract with Delta BEC, a South African engineering firm. The master plan evaluated near-term development tactics that preserved long-range opportunities, and required extensive collaboration with the airlines, South African Air Traffic Navigation Services, and Dube Tradeport.